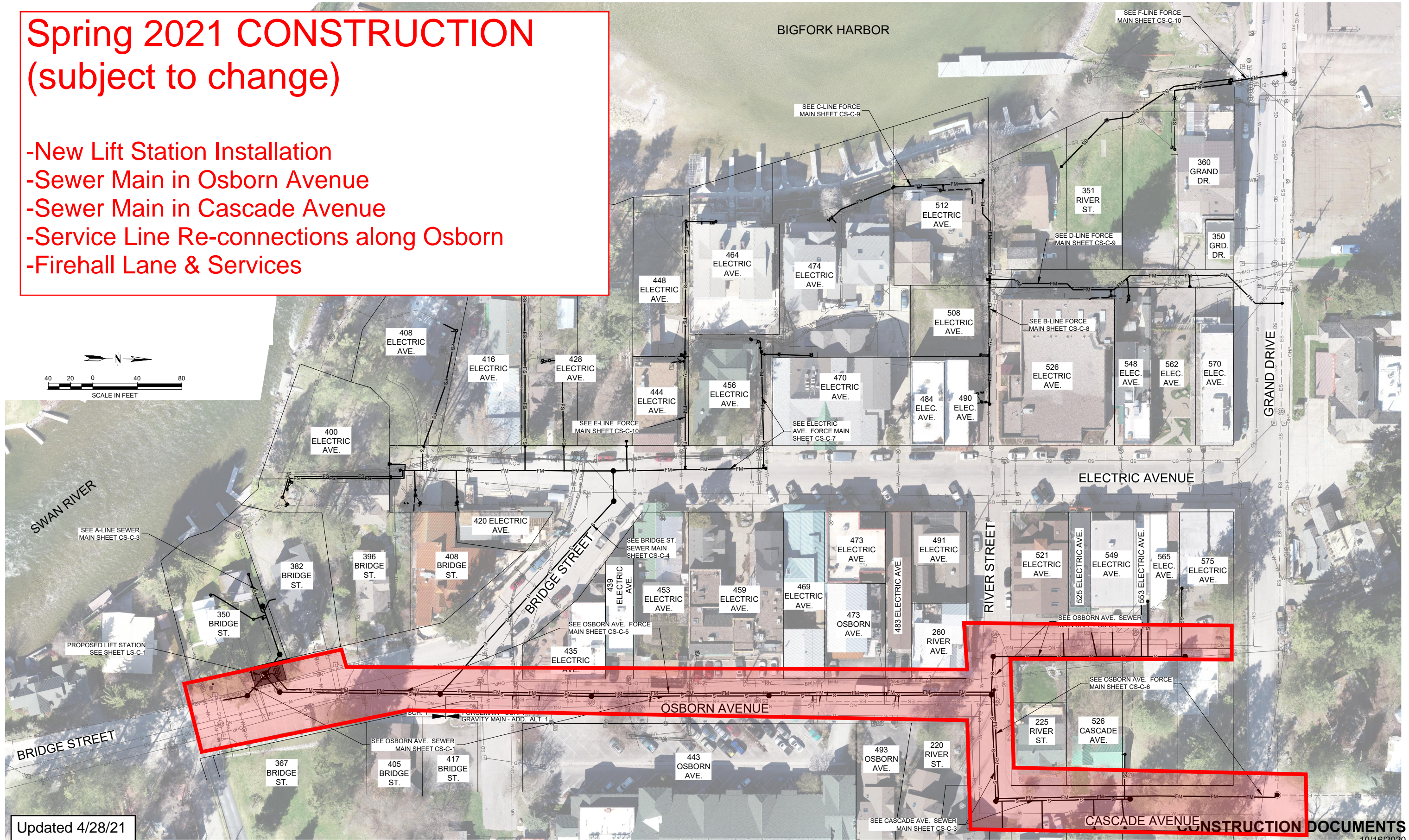


# Spring 2021 CONSTRUCTION (subject to change)

- New Lift Station Installation
- Sewer Main in Osborn Avenue
- Sewer Main in Cascade Avenue
- Service Line Re-connections along Osborn
- Firehall Lane & Services



Updated 4/28/21

CONSTRUCTION DOCUMENTS  
10/16/2020

VERIFY SCALE!		REVISIONS	
NO.	DESCRIPTION	BY	DATE

THESE PRINTS MAY BE REDUCED. LINE BELOW MEASURES ONE INCH ON ORIGINAL DRAWING.  
MODIFY SCALE ACCORDINGLY!

**Morrison Maierle**  
engineers • surveyors • planners • scientists

125 Schoolhouse Loop  
Kalispell, MT 59901  
406.752.2216  
www.m-m.net

PROFESSIONAL ENGINEER  
MONTANA  
JEFFREY D. CICON  
23787 PE

DATE: 2/12/2020

Q.C. REVIEW BY: RJM  
DATE: 2/12/2020

BAY SANITARY SEWER IMPROVEMENTS

BIGFORK MONTANA

OVERALL LAYOUT PLAN

PROJECT NUMBER 3835.001.36  
SHEET NUMBER 3  
DRAWING NUMBER G-3

U:\3835\001.36 - BAY SEWER REPLACEMENT\ACAD\3835-G-3-OVERALL LAYOUT PLAN.DWG PLOTTED BY:CREG DIEZIGER ON Oct/15/2020

COPYRIGHT © MORRISON-MAIERLE, INC. 2020